

Models for Special Purpose

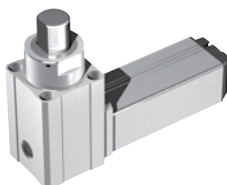
RCP4 Series

24v
stepper
motor

RCP4-ST



RCP4-ST4525E



RCP6 Series

Battery-
less
absolute

Slide

Solenoid
gripper

24v
stepper
motor

RCP6-RTCKSRE/RTCKSRI



RCP6-RTCKSPE/RTCKSPI



RCP6-RTCKMRE/RTCKMRI



RCP6-RTCKMPE/RTCKMPI



Applicable controller

1 axis

PCON controller

(Note) To operate the gripping part of RCP6-RTCK, a driver box is necessary.



Actuator
■ 1 axis

2 axes or more

RCON controller



Actuator
■ 2 axes or more

Complex operations (program type)

RSEL Controller



■ Operations with a 2D/3D trajectory
■ Palletizing operations
■ Registration of multi-axis operations

WU Series

Battery-
less
absolute

24v
stepper
motor

WU-S



WU-M



ZR Series

ZR-S



ZR-M



Applicable controller

Refer to the each actuator page for details.